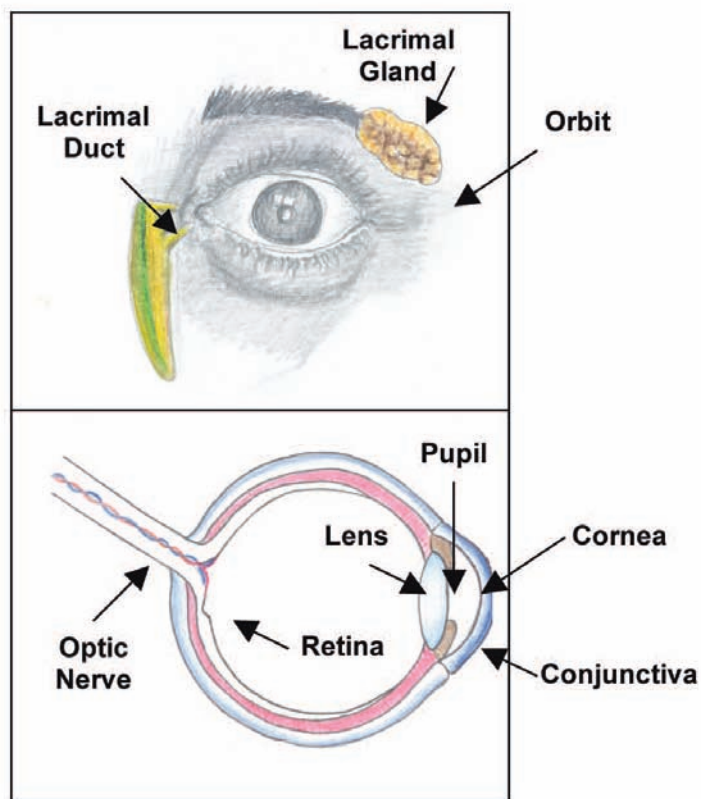


Keeping Your Eyes Healthy after Treatment for Childhood Cancer

High doses of radiation to the brain, eye, or eye socket (orbit) during treatment for childhood cancer can have a long-lasting affect on the eyes. Radioiodine treatment and chronic graft-versus-host disease (an immune response that can develop after bone marrow or stem cell transplant) can also affect the eyes. Because vision can have a significant impact on daily living, it is important for survivors who received these treatments to have their eyes checked regularly.

How do the eyes work?

The eyes are remarkable organs, allowing light to be converted into impulses that are transmitted to the brain, where images are perceived. The eyes are located in the area of the skull known as the **orbit** or eye socket. A thin layer of tissue called the **conjunctiva** covers and protects the eye and eyelids. Tears are produced in the **lacrimal gland**, located in the outer corner of the eye socket, above the eyeball. Tears flow over the eye, providing lubrication, and drain into a tiny canal at the inner corner of the eye, called the **lacrimal duct**. Light enters the eye through a clear layer of tissue known as the **cornea**. The cornea bends and focuses the light, and sends it through the opening of the eye known as the **pupil**. The pupil controls how much light enters the eye. Behind the pupil is the **lens** of the eye, which focuses the light onto the **retina**, the membrane along the back wall of the eye. The nerve cells in the retina change the light into electrical impulses and send them through the **optic nerve** to the brain, where the image is perceived.



What eye problems can develop following treatment for childhood cancer?

Cataracts: Clouding of the lens of the eye. When this happens, light cannot pass through the lens easily. Common symptoms of cataracts include painless blurring of

vision, sensitivity to light and glare, double vision in one eye, poor night vision, fading or yellowing of colors, and the need for frequent changes in glasses or contact lens prescriptions (see related Health Link: Cataracts).

Xerophthalmia: Dry eyes resulting from decreased tear production due to radiation or chronic graft-versus-host disease. Symptoms include pain at the surface of the eye and light sensitivity.

Lacrimal duct atrophy: Shrinking of the lacrimal duct, which drains tears from the eye. Lacrimal duct atrophy can result in problems with increased tearing. This can be caused by radiation to the eye or orbit, or by radioiodine (I-131) therapy given for treatment of thyroid cancer.

Other eye problems:

The following eye problems are less common and are usually seen only in survivors who had higher-dose radiation treatments directed at the eye or orbit:

Orbital hypoplasia: Underdevelopment of the eye and surrounding tissues, caused by radiation to the eye or orbit. This can result in a small eye and orbit (orbital hypoplasia).

Enophthalmos: Sunken eyeball within the orbit as a result of radiation.

Keratitis: Inflammation of the cornea (the clear, outer surface of the eye). This can cause pain at the surface of the eye and light sensitivity.

Telangiectasias: Enlargement of blood vessels in the white part of the eye. These do not usually cause any symptoms, but are sometimes bothersome because of their appearance.

Retinopathy: Damage to the retina (the back surface of the eye where visual information is passed from the eye to the brain). Painless vision loss is the major symptom of retinopathy.

Maculopathy: Damage to the macula (area of central vision within the retina), which may result in blurred vision.

Optic chiasm neuropathy: Damage to the nerves that send visual information from the eye to the brain. This can result in vision loss.

Papillopathy: Swelling of the optic disc (area where the optic nerve enters the eye).

Glaucoma: Increased pressure within the eye. This can damage the optic nerve and result in vision loss.

What cancer therapies increase the risk of developing these eye complications?

- **Radiation therapy** at doses of 30 Gy (3000 cGy/rads) or higher to the following areas increases the risk of treatment-related eye problems:
 - Eye
 - Orbits
 - Brain (cranial)
- **Other factors that may increase the risk** for developing certain eye problems include:
 - **Radioiodine (I-131)** treatment for thyroid cancer (increased risk for lacrimal duct atrophy)
 - **Chronic graft-versus-host disease** following bone marrow, cord blood, or stem cell transplant (increased risk for xerophthalmia)
 - **Diabetes mellitus** (increased risk for problems involving the retina and optic nerve)
 - **High blood pressure** (increased risk of optic chiasm neuropathy)
 - **Frequent exposure to sunlight** (increased risk for cataracts)
 - **Certain chemotherapy** drugs, such as, actinomycin-D and doxorubicin, which can increase the risk of eye problems when given together with radiation.

What monitoring is recommended?

- Evaluation by an ophthalmologist at least once a year is recommended for any one who:
 - Had a tumor involving the eye
 - Had radiation to the brain, eye, or orbit at doses of 30 Gy (3000 cGy) or higher
 - Has graft-versus-host disease (as a result of bone marrow, cord blood, or stem cell transplant)

Note: An ophthalmologist is a medical doctor (MD or DO) who specializes in eye problems – this is different from a doctor of optometry (OD), who is also a vision specialist but not a medical doctor. Examination by an ophthalmologist should include vision screening, examination for cataracts, and a full examination of the internal structures of the eye. People who develop vision problems should be followed regularly by an ophthalmologist.

- Evaluation by an ophthalmologist (a trained person who makes and fits artificial eyes) at least once a year is recommended for anyone who has had:
 - An eye removed because of cancer treatment and/or complications related to treatment
 - An artificial eye (prosthesis) that does not fit well
- Evaluation by an ophthalmologist is recommended on an as-needed basis for people who had Radioiodine (I-131) treatment, if they develop excessive tearing.

If you develop any of the following symptoms, seek prompt medical evaluation. In some cases, referral to an ophthalmologist may be needed:

- Blurry vision
- Double vision
- Blind spots
- Sensitivity to light
- Poor night vision
- Persistent irritation of surface of eye or eyelids
- Excessive tearing/watering of eyes
- Pain within the eye
- Dry eyes

How are eye problems treated?

Cataracts: Not all cataracts need treatment. In many cases, an ophthalmologist may monitor the vision closely over many years, and will recommend treatment if and when it becomes necessary. The only treatment for cataracts is surgical removal of the lens and replacement with an artificial lens. Today, cataract surgery is a low-risk procedure that is performed on an outpatient basis and works well in restoring vision.

Orbital hypoplasia: Usually no treatment is needed for orbital hypoplasia. In severe cases, rebuilding of the bones around the eye may be possible.

Enophthalmos: Plastic surgery can be done to build up the orbit.

Lacrimal duct atrophy: A surgical procedure to widen the tear drainage system can be performed if heavy tearing is a significant problem.

Xerophthalmia: Treatment of dry eye includes the frequent use of artificial tears (eye drops) or ointments to moisten the surface of the eye. In severe cases, the tear drainage system can be blocked by surgery to reduce the drainage of tears from the eye.

Keratitis: The frequent use of artificial tears (eye drops) or ointments to moisten the surface of the eye is recommended. Patching the affected eye during sleep may also promote healing. Keratitis caused by infection is treated with antibiotic eye drops or ointment. Rarely, surgical replacement (transplant) of the cornea is necessary.

Telangiectasias: No treatment is necessary.

Retinopathy and maculopathy: Retinopathy may require laser or photocoagulation (heat) treatment of the retina. Rarely, surgery to remove the eye is necessary in severe cases.

Optic chiasm neuropathy: No treatment available.

What can be done if there is impaired vision?

If impaired vision is detected, it is important to follow the recommendations of your ophthalmologist regarding treatment. If vision is not correctable, services are available in most communities to assist people with visual impairments.

In addition, in the United States, services are available for people under 22 years of age through the local public school district or referral agencies (available under the Individuals with Disabilities Education Act, PL 105-17). Sometimes special accommodations, such as seating in the front of the classroom are all that is needed, but this usually requires that the parent request an Individualized Education Plan (IEP) for the child through the school district (*see related Health Link: "Educational Issues Following Treatment for Childhood Cancer"*).

The Americans with Disabilities Act (ADA, PL 101-336) guarantees people with visual impairment equal access to public events, spaces, and opportunities.

How can I protect my vision?

It's important to protect your eyes whether or not you have treatment-related eye disorders. Precautions you can take include:

- Wear sunglasses with UV protection when in bright sunlight.
- When participating in sports, be sure to select protective eyewear that is appropriate for the sport. Eyewear worn for sports should be properly fitted by an eye care professional.
- Avoid toys with sharp, protruding, or projectile parts.
- Never play with fireworks or sparklers of any kind to avoid accidental injury.

- Be careful when working with hazardous household chemicals.
- Wear protective eyewear when using a lawnmower, power trimmer, or edger, and when working with dangerous equipment in the workshop.
- If you do experience an eye injury, seek medical attention promptly.

Written by Teresa Sweeney RN, MSN, CPNP, After Completion of Therapy (ACT) Clinic, St. Jude Children's Research Hospital, Memphis, TN.

Reviewed by Julie Blatt MD, Debra Friedman MD, Melissa M. Hudson MD, Revonda Mosher RN, MSN, CPNP, CPON®, and Lise Yasui.

Illustrated by Devika Bhatia.

Additional health information for childhood cancer survivors is available at www.survivorshipguidelines.org

Note: Throughout this *Health Links* series, the term "childhood cancer" is used to designate pediatric cancers that may occur during childhood, adolescence, or young adulthood. *Health Links* are designed to provide health information for survivors of pediatric cancer, regardless of whether the cancer occurred during childhood, adolescence, or young adulthood.

Disclaimer and Notice of Proprietary Rights

Introduction to Late Effects Guidelines and Health Links: The "Long-Term Follow-Up Guidelines for Survivors of Childhood, Adolescent, and Young Adult Cancers" and accompanying "Health Links" were developed by the Children's Oncology Group as a collaborative effort of the Late Effects Committee and Nursing Discipline and are maintained and updated by the Children's Oncology Group's Long-Term Follow-Up Guidelines Core Committee and its associated Task Forces.

For Informational Purposes Only: The information and contents of each document or series of documents made available from by the Children's Oncology Group relating to late effects of cancer treatment and care or containing the title "Long-Term Follow-Up Guidelines for Survivors of Childhood, Adolescent, and Young Adult Cancers" or the title "Health Link", whether available in print or electronic format (including any digital format, e-mail transmission, or download from the website), shall be known hereinafter as "Informational Content". All Informational Content is for informational purposes only. The Informational Content is not intended to substitute for medical advice, medical care, diagnosis or treatment obtained from a physician or health care provider.

To cancer patients (if children, their parents or legal guardians): Please seek the advice of a physician or other qualified health provider with any questions you may have regarding a medical condition and do not rely on the Informational Content. The Children's Oncology Group is a research organization and does not provide individualized medical care or treatment.

To physicians and other healthcare providers: The Informational Content is not intended to replace your independent clinical judgment, medical advice, or to exclude other legitimate criteria for screening, health counseling, or intervention for specific complications of childhood cancer treatment. Neither is the Informational Content intended to exclude other reasonable alternative follow-up procedures. The Informational Content is provided as a courtesy, but not intended as a sole source of guidance in the evaluation of childhood cancer survivors. The Children's Oncology Group recognizes that specific patient care decisions are the prerogative of the patient, family, and healthcare provider.

No endorsement of any specific tests, products, or procedures is made by Informational Content, the Children's Oncology Group, or affiliated party or member of the Children's Oncology Group.

No Claim to Accuracy or Completeness: While the Children's Oncology Group has made every attempt to assure that the Informational Content is accurate and complete as of the date of publication, no warranty or representation, express or implied, is made as to the accuracy, reliability, completeness, relevance, or timeliness of such Informational Content.

No Liability on Part of Children's Oncology Group and Related Parties/ Agreement to Indemnify and Hold Harmless the Children's Oncology Group and Related Parties:

No liability is assumed by the Children's Oncology Group or any affiliated party or member thereof for damage resulting from the use, review, or access of the Informational Content. You agree to the following terms of indemnification: (i) "Indemnified Parties" include authors and contributors to the Informational Content, all officers, directors, representatives, employees, agents, and members of the Children's Oncology Group and affiliated organizations; (ii) by using, reviewing, or accessing the Informational Content, you agree, at your own expense, to indemnify, defend and hold harmless Indemnified Parties from any and all losses, liabilities, or damages (including attorneys' fees and costs) resulting from any and all claims, causes of action, suits, proceedings, or demands related to or arising out of use, review or access of the Informational Content.

Proprietary Rights: The Informational Content is subject to protection under the copyright law and other intellectual property law in the United States and worldwide. The Children's Oncology Group retains exclusive copyright and other right, title, and interest to the Informational Content and claims all intellectual property rights available under law. You hereby agree to help the Children's Oncology Group secure all copyright and intellectual property rights for the benefit of the Children's Oncology Group by taking additional action at a later time, action which could include signing consents and legal documents and limiting dissemination or reproduction of Informational Content.