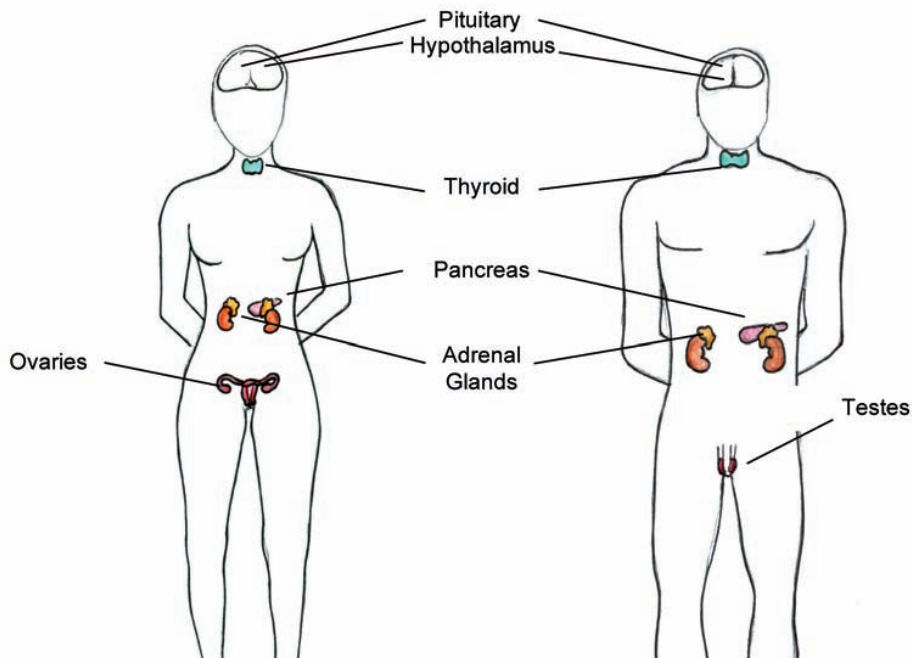


Endocrine Problems after Childhood Cancer: Growth Hormone Deficiency

Some people who were treated for cancer during childhood may develop endocrine (hormone) problems as a result of changes in the function of a complex system of glands known as the endocrine system.

What is the endocrine system?

The endocrine system is a group of glands that regulates many body functions including growth, puberty, energy level, urine production, and stress response. Glands of the endocrine system include the pituitary, hypothalamus, thyroid, adrenals, pancreas, ovaries (in females), and testes (in males). The hypothalamus and pituitary are sometimes called the "master glands" because they control many of the other glands in the endocrine system. Unfortunately, some treatments given for childhood cancer can damage the endocrine system, resulting in a variety of problems.



What are hormones?

Hormones are chemical messengers that carry information from the endocrine glands through the bloodstream to the body's cells. The endocrine system makes many hormones (such as growth hormone, sex hormones, adrenal and thyroid hormones) that work together to maintain specific bodily functions.

What is growth hormone deficiency?

Growth hormone (GH) is made by the pituitary gland. In order for children to grow to their full height potential, they need adequate amounts of GH. GH works with thyroid hormone, exercise, proper nutrition, and rest to help children and teenagers grow. GH also helps maintain normal blood sugar levels and is needed for the normal development of teeth. In addition to helping with bone growth, GH affects how well the heart and blood vessels work, how the body uses fat, makes muscle, and strengthens bones, and generally influences overall health throughout life. In healthy people, GH production continues into adulthood. Adults need small amounts of GH to maintain proper amounts of fat, muscle and bone. GH may also play a role in regulating mood and emotion.

Cancer treatments, such as radiation or surgery to structures in the head or brain, may cause malfunction of the glands that control growth. As a result, the pituitary gland may not make enough GH, resulting in growth hormone deficiency. GH deficiency can also occur in people who have never had cancer treatment.

Signs and symptoms of growth hormone deficiency

Slowing of growth (height) is one of the most obvious signs of GH deficiency in children. A GH deficient child usually grows less than 2 inches per year. Children with GH deficiency are smaller and tend to look younger than children their same age, but they usually have normal body proportions.

Adults who have GH deficiency may have a variety of different physical symptoms, such as thinning of the bones, decreased muscle strength, increased body fat, or high blood cholesterol levels. Adults may also have emotional symptoms such as feeling tired, anxious, irritable, gloomy, unmotivated, or having a decreased interest in sex.

Risk factors for growth hormone deficiency

Risk factors related to treatment for cancer during childhood include:

- Cancer treatment before reaching adult height, especially in very young patients
- Radiation to any of the following areas:
 - Brain (cranial)
 - Eye or eye socket (orbit)
 - Ear or infratemporal region (midfacial area behind the cheekbones)
 - Nasopharynx (area above the roof of the mouth)
 - Total body (TBI)

- Surgery to the brain, especially the central region of the brain where the pituitary gland is located (suprasellar region)

Recommended screening after cancer treatment

All childhood cancer survivors should have a **yearly physical examination** including measurement of height and weight, and assessment of pubertal status, nutritional status, and overall well-being. **For patients with the risk factors listed above, this screening should be done every 6 months until growth is completed.** If there are signs of poor growth, an x-ray of the wrist (**bone age x-ray**) should be done. Other possible causes of growth problems, such as low thyroid function, should also be checked.

If GH deficiency is suspected, your healthcare provider will probably refer you to an endocrinologist (doctor who specializes in hormone problems). The endocrinologist will do more specific tests to evaluate the problem.

How is growth hormone deficiency treated?

If GH deficiency is detected, your endocrinologist will suggest treatment options for you. Usually this involves supplementing or replacing the GH that your pituitary gland is not making on its own. Synthetic GH is given by injection. GH is usually given for several years, until the person reaches an acceptable adult height or the greatest possible height. Your endocrinologist can give you information about how much growth is possible on GH therapy. Treatment options for GH deficiency that persists into adulthood should be discussed on an individual basis with your endocrinologist.

Written by Debra Eshelman, RN, MSN, CPNP, After the Cancer Experience (ACE) Pediatric and Young Adult Survivor Programs, Children's Medical Center of Dallas and the University of Texas Southwestern Medical Center, Dallas, TX.

Reviewed by Lillian R. Meacham MD, Priscilla Rieves, MS, RN, CPNP, Charles Sklar MD, Julie Blatt MD, Melissa M. Hudson MD, Winnie Kittiko RN, MS, and Sarah Bottomley MN, RN, CPNP, CPON®.

Illustrated by Devika Bhatia

Additional health information for childhood cancer survivors is available at
www.survivorshipguidelines.org

Note: Throughout this *Health Links* series, the term "childhood cancer" is used to designate pediatric cancers that may occur during childhood, adolescence, or young adulthood. *Health Links* are designed to provide health information for survivors of pediatric cancer, regardless of whether the cancer occurred during childhood, adolescence, or young adulthood.

Disclaimer and Notice of Proprietary Rights

Introduction to Late Effects Guidelines and Health Links: The "Long-Term Follow-Up Guidelines for Survivors of Childhood, Adolescent, and Young Adult Cancers" and accompanying "Health Links" were developed by the Children's Oncology Group as a collaborative effort of the Late Effects Committee and Nursing Discipline and are maintained and updated by the Children's Oncology Group's Long-Term Follow-Up Guidelines Core Committee and its associated Task Forces.

For Informational Purposes Only: The information and contents of each document or series of documents made available from by the Children's Oncology Group relating to late effects of cancer treatment and care or containing the title "Long-Term Follow-Up Guidelines for Survivors of Childhood, Adolescent, and Young Adult Cancers" or the title "Health Link", whether available in print or electronic format (including any digital format, e-mail transmission, or download from the website), shall be known hereinafter as "Informational Content". All Informational Content is for informational purposes only. The Informational Content is not intended to substitute for medical advice, medical care, diagnosis or treatment obtained from a physician or health care provider.

To cancer patients (if children, their parents or legal guardians): Please seek the advice of a physician or other qualified health provider with any questions you may have regarding a medical condition and do not rely on the Informational Content. The Children's Oncology Group is a research organization and does not provide individualized medical care or treatment.

To physicians and other healthcare providers: The Informational Content is not intended to replace your independent clinical judgment, medical advice, or to exclude other legitimate criteria for screening, health counseling, or intervention for specific complications of childhood cancer treatment. Neither is the Informational Content intended to exclude other reasonable alternative follow-up procedures. The Informational Content is provided as a courtesy, but not intended as a sole source of guidance in the evaluation of childhood cancer survivors. The Children's Oncology Group recognizes that specific patient care decisions are the prerogative of the patient, family, and healthcare provider.

No endorsement of any specific tests, products, or procedures is made by Informational Content, the Children's Oncology Group, or affiliated party or member of the Children's Oncology Group.

No Claim to Accuracy or Completeness: While the Children's Oncology Group has made every attempt to assure that the Informational Content is accurate and complete as of the date of publication, no warranty or representation, express or implied, is made as to the accuracy, reliability, completeness, relevance, or timeliness of such Informational Content.

No Liability on Part of Children's Oncology Group and Related Parties/ Agreement to Indemnify and Hold Harmless the Children's Oncology Group and Related Parties:

No liability is assumed by the Children's Oncology Group or any affiliated party or member thereof for damage resulting from the use, review, or access of the Informational Content. You agree to the following terms of indemnification: (i) "Indemnified Parties" include authors and contributors to the Informational Content, all officers, directors, representatives, employees, agents, and members of the Children's Oncology Group and affiliated organizations; (ii) by using, reviewing, or accessing the Informational Content, you agree, at your own expense, to indemnify, defend and hold harmless Indemnified Parties from any and all losses, liabilities, or damages (including attorneys' fees and costs) resulting from any and all claims, causes of action, suits, proceedings, or demands related to or arising out of use, review or access of the Informational Content.

Proprietary Rights: The Informational Content is subject to protection under the copyright law and other intellectual property law in the United States and worldwide. The Children's Oncology Group retains exclusive copyright and other right, title, and interest in the Informational Content and claims all intellectual property rights available under law. You hereby agree to help the Children's Oncology Group secure all copyright and intellectual property rights for the benefit of the Children's Oncology Group by taking additional action at a later time, action which could include signing consents and legal documents and limiting dissemination or reproduction of Informational Content.